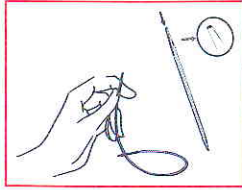


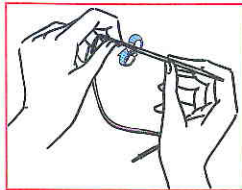


Prym NATURAL 'Interchangeable knitting pin points': Flexible knitting guaranteed.
Gives the possibility to use different diameters/sizes of knitting pin points with varied cord lengths.

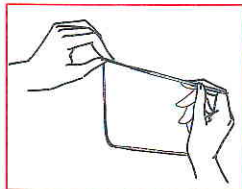
How to fix knitting pin points and cords together



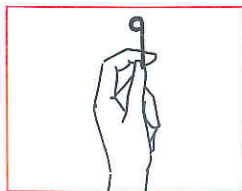
To start using the knitting pins, screw the cord of the required length on to the hollow metal part of the knitting pin point.



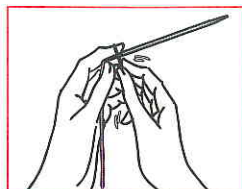
Screw the threaded end of the cord onto the hollow pin point end.



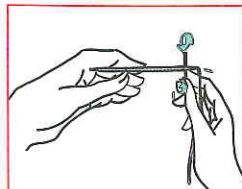
Follow the same process with the other end of the cord and the second knitting pin point.



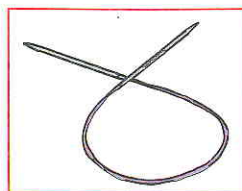
To tighten the cord to the knitting pin point on both sides, use the attaching pin provided with the set.



Insert the attaching pin into the hole provided in the cord and use it like a handle to tighten the cord and the knitting pin point together.

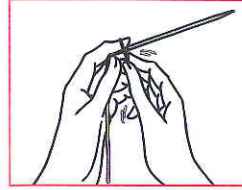


Follow the same process on the other knitting pin point and the other side of the cord.

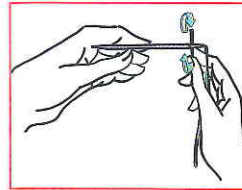


Please check the tightening and your circular knitting pins are ready for use now.

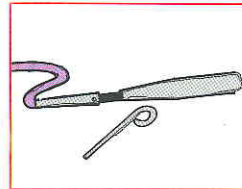
How to unscrew the knitting pin points from the cord



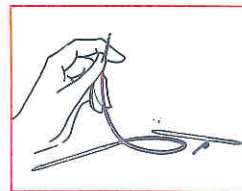
If you wish to exchange the knitting pin points, separate the cord from the pin point by unscrewing both parts.



Use the attaching pin as a handle to unscrew the cord from the knitting pin point by inserting the attaching pin into the hole provided in the cord.

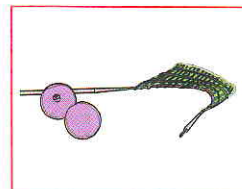


Use the attaching pin as a handle and carefully unscrew the knitting pin point from the cord.

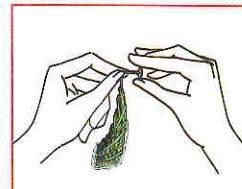


Follow the same process on the other knitting pin point.

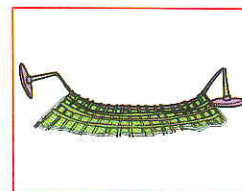
How to use the end caps



After carefully unscrewing the knitting pin point from the cord, use the end caps given with the set to prevent your knitting slipping out from the cord.



Screw the threaded portion of the end cap on to the cord end and tighten it properly.



Follow the same process on the other side of the cord which should also be closed with the help of the end caps.

About Prym NATURAL:

The wood used for Prym NATURAL knitting pins is specially designed laminated coloured birch wood with a high specific density exceeding 1.20. The colours used in the wood are absolutely safe to use as testified by an independent laboratory. Tests have been taken to confirm that no colour would come off from the wood during normal knitting use.